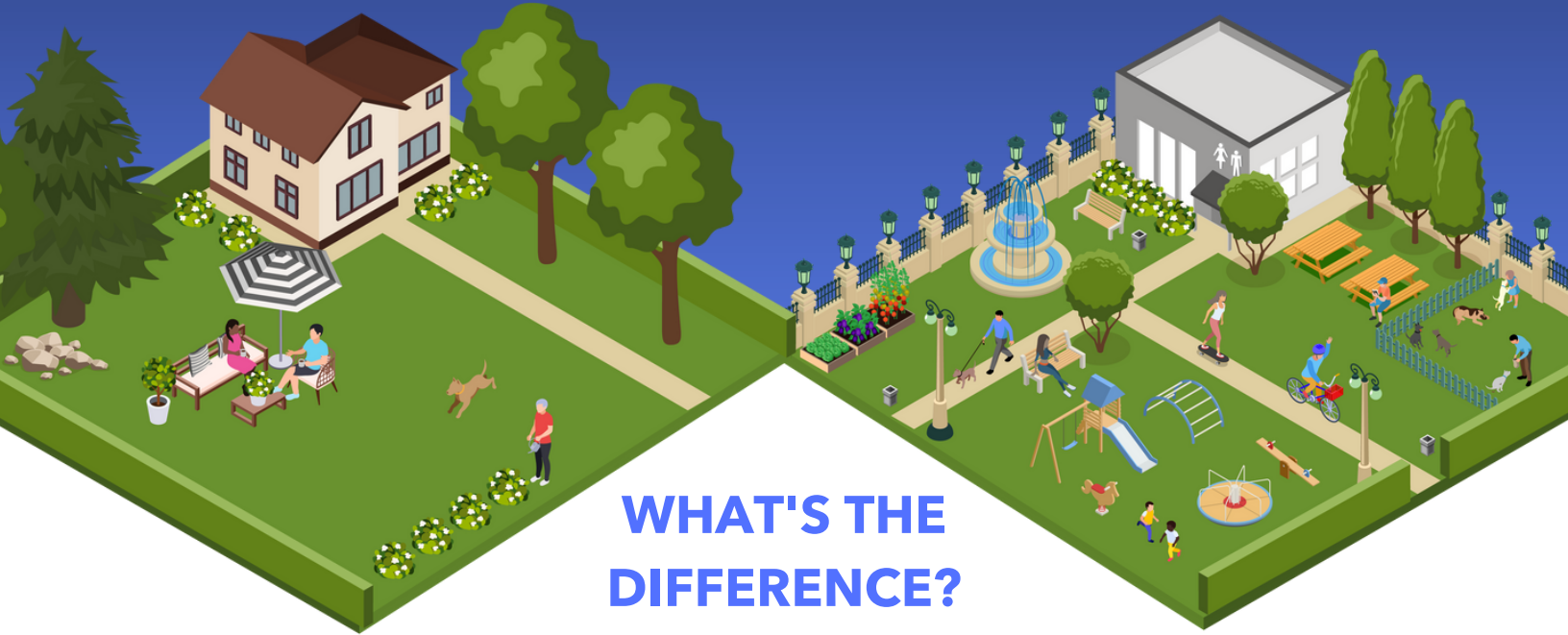


1 MHz of
LICENSED
Spectrum



1 MHz of
UNLICENSED
Spectrum



WHAT'S THE DIFFERENCE?

LICENSED SPECTRUM

is like a private house with a yard. Homeowners buy the exclusive use of that space and can largely do whatever they want with it. Like that yard space, licensed spectrum is valuable to those that buy it because of its exclusivity.

But not everyone can afford a house with a yard and some don't need a yard. That's where unlicensed spectrum comes in — it provides a shared space for all kinds of users in the community, as long as they follow the rules

MOST UNLICENSED BANDS REQUIRE SHARING. For example, 5.1 GHz shares with satellites, 5.3 GHz with the government, 5.9 GHz with DoD and 6 GHz with microwave towers and broadcasters.

UNLICENSED SPECTRUM

is like a public park. Some will likely find it less valuable than their own private yards. The park has rules that require sharing the space with others — but it still has immense value to the whole community, including homeowners.

While a private yard and a public park might be similar in size, their values are completely different. It's the same with unlicensed and licensed spectrum.

You can't use a megahertz-to-megahertz comparison because it's apples and oranges. Unlicensed and licensed spectrum, while similar, address different uses and often different users and have different roles in meeting connectivity needs.